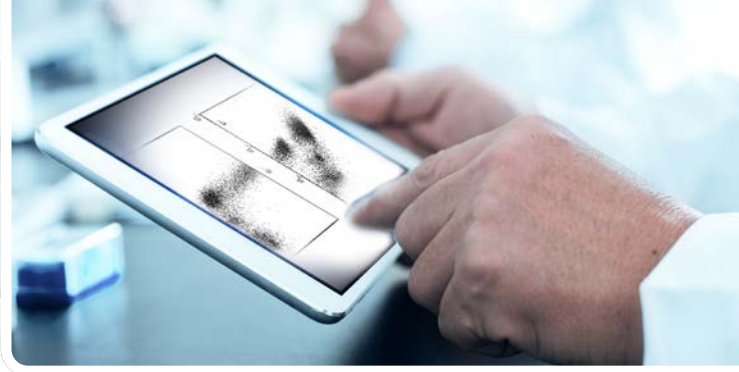


# FLOW CYTOMETRY MENU



## Acute Panel

Markers: cMPO, cTdT, cCD79a, CD1a, CD34, cCD3, cCD22

## Apoptosis Panel

Markers: CD13, CD33, CD34, CD117, CD45, Caspase3, PUMA, MDM2, Ki67, PD-L1

## Combined Multiple Myeloma Panel

Markers: CD3, CD4, CD5, CD7, CD8, CD10, CD19, CD20, CD28, CD34, CD38, CD45, CD56, CD117, CD138, clgA, clgG, clgM, cKappa, cLambda, sKappa, sLambda

## Immuno Oncology Flow Panel

Markers: CD194 (CCR4), CD196 (CCR6), CCR7 (CD197), CD183 (CXCR3), CD38, CD3, CD4, CD8, HLA-DR, CD45, CD45RA, CD45RO, CD25, CD127, CD24, CD27, CD20, CD19, CD1d, CD38, CD5, FoxP3, IgM

## Lymphoid Panel

Markers: sKappa, sLambda, CD2, CD3, CD4, CD5, CD7, CD8, CD10, CD11c, CD19, CD20, CD23, CD38, CD45, CD56, CD57

## Lymphoid/Myeloid Panel

Markers: sKappa, sLambda, CD2, CD3, CD4, CD5, CD7, CD8, CD10, CD11c, CD19, CD20, CD23, CD38, CD45, CD56, CD57, CD11b, CD13, CD14, CD15, CD16, CD22, CD33, CD34, CD64, CD71, CD117, HLA-DR

## MRD-CLL Panel

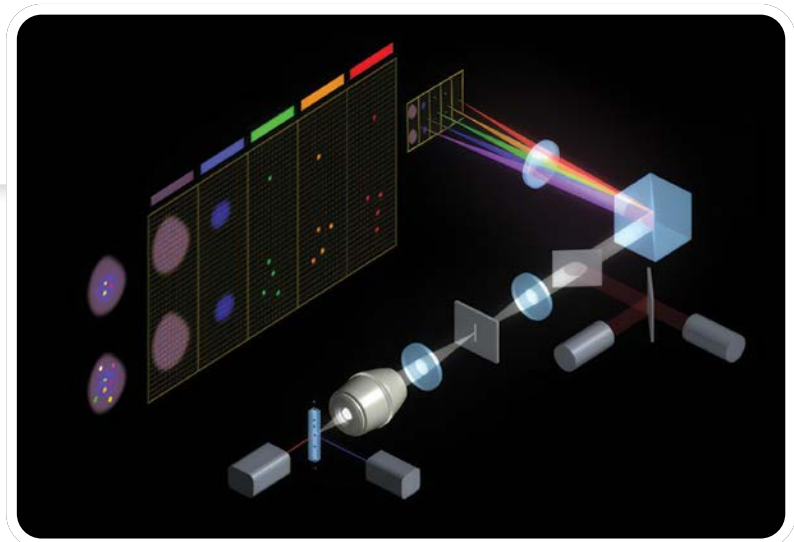
Markers: CD3, CD5, CD19, CD20, CD22, CD38, CD43, CD45, CD79b, CD81, sKappa, sLambda

## Plasma Cell Neoplasm Panel

Markers: CD3, CD4, CD5, CD7, CD8, CD10, CD19, CD20, CD28, CD34, CD38, CD45, CD56, CD117, CD138, clgA, clgG, clgM, cKappa, cLambda, sKappa, sLambda

## Zap70/CD38 Panel

Markers: CD3, CD5, CD19, CD45, cZAP-70



Contact us today for a consultation!

 **Flagship BIOSCIENCES**

303.325.5894 | [info@flagshipbio.com](mailto:info@flagshipbio.com)

11800 Ridge Parkway, Suite 450 | Broomfield, CO 80021

[flagshipbio.com](http://flagshipbio.com)